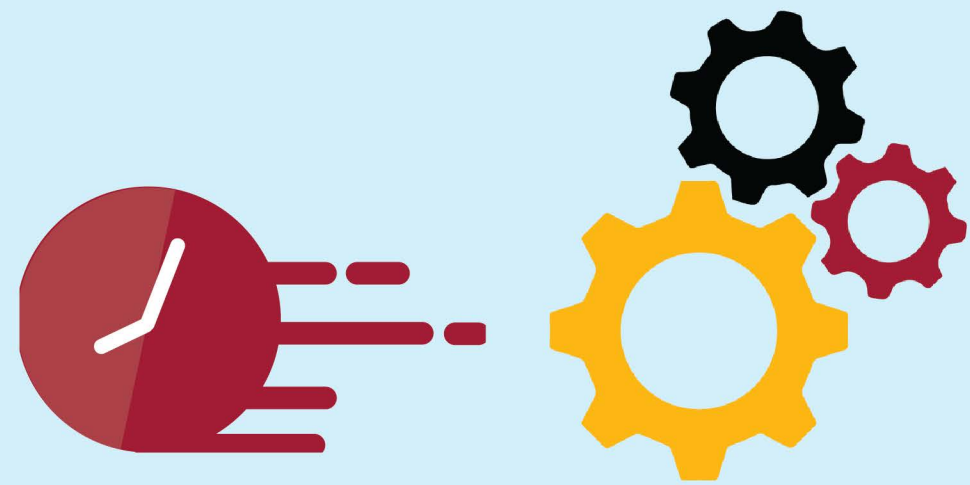


WHAT is TSMO?

An integrated approach to planning, engineering, operating, and maintaining existing facilities to maximize their full-service potential, and ultimately improve the safety, security, and reliability of our transportation network.

WHY TSMO?

SUPPLY



System operating at/over capacity
Multiple priorities (State of Good Repair (SOGR), Safety, Mobility, Capacity, Economy)

VS

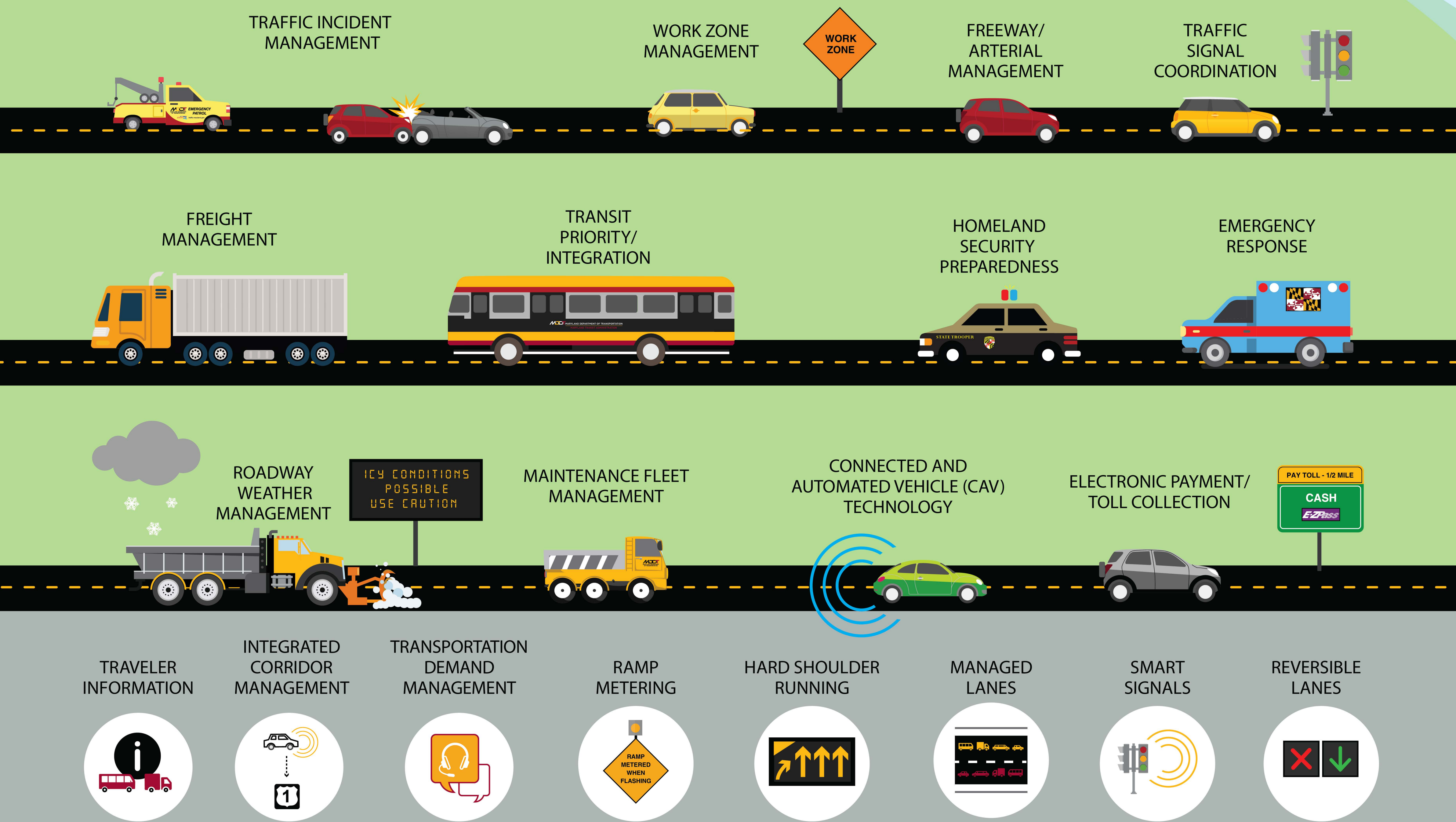
DEMAND



MD VMT and congestion levels at all time high - one of the most congested regions in US
Technology is playing a huge role for travel decisions (commute, shop, other)

HOW is TSMO implemented?

Through the consideration and addition of any or a combination of the following as a transportation solution



TSMO makes sense.

Compared to capacity expansion, TSMO strategies:

- Address all sources of congestion - recurring + non-recurring
- Are inexpensive and cost-effective
- Take little or no extra right-of-way
- Can be deployed in months rather than years